

100

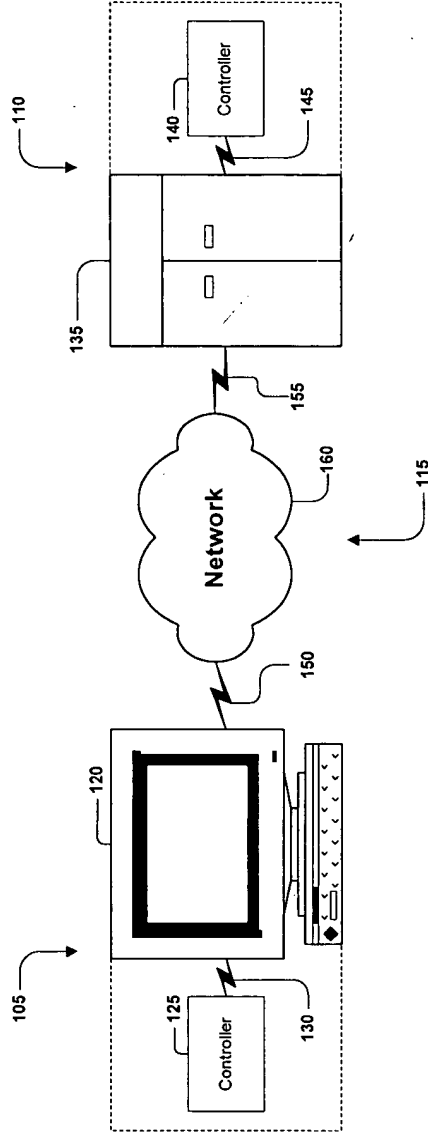


Fig. 1

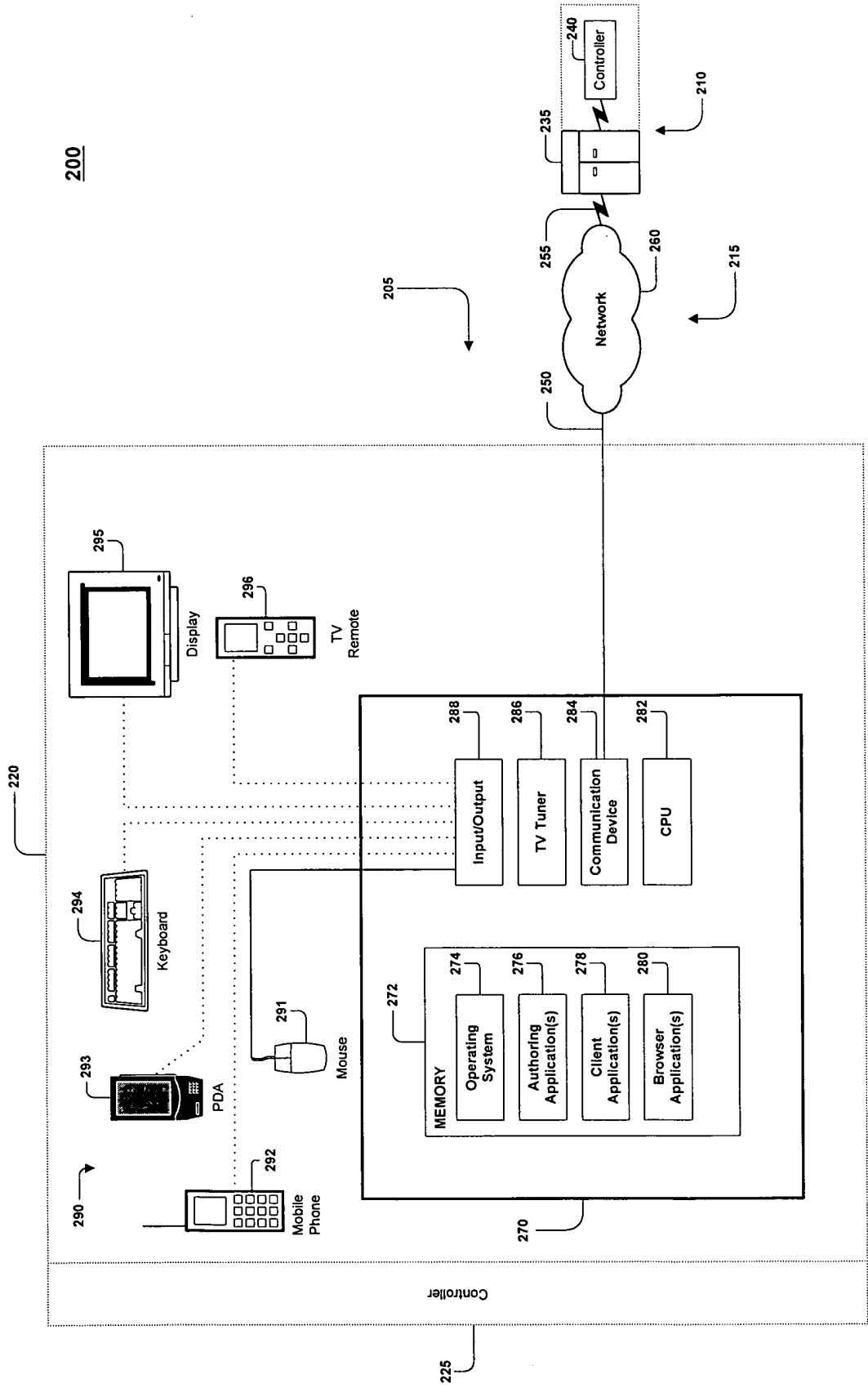


Fig. 2

300

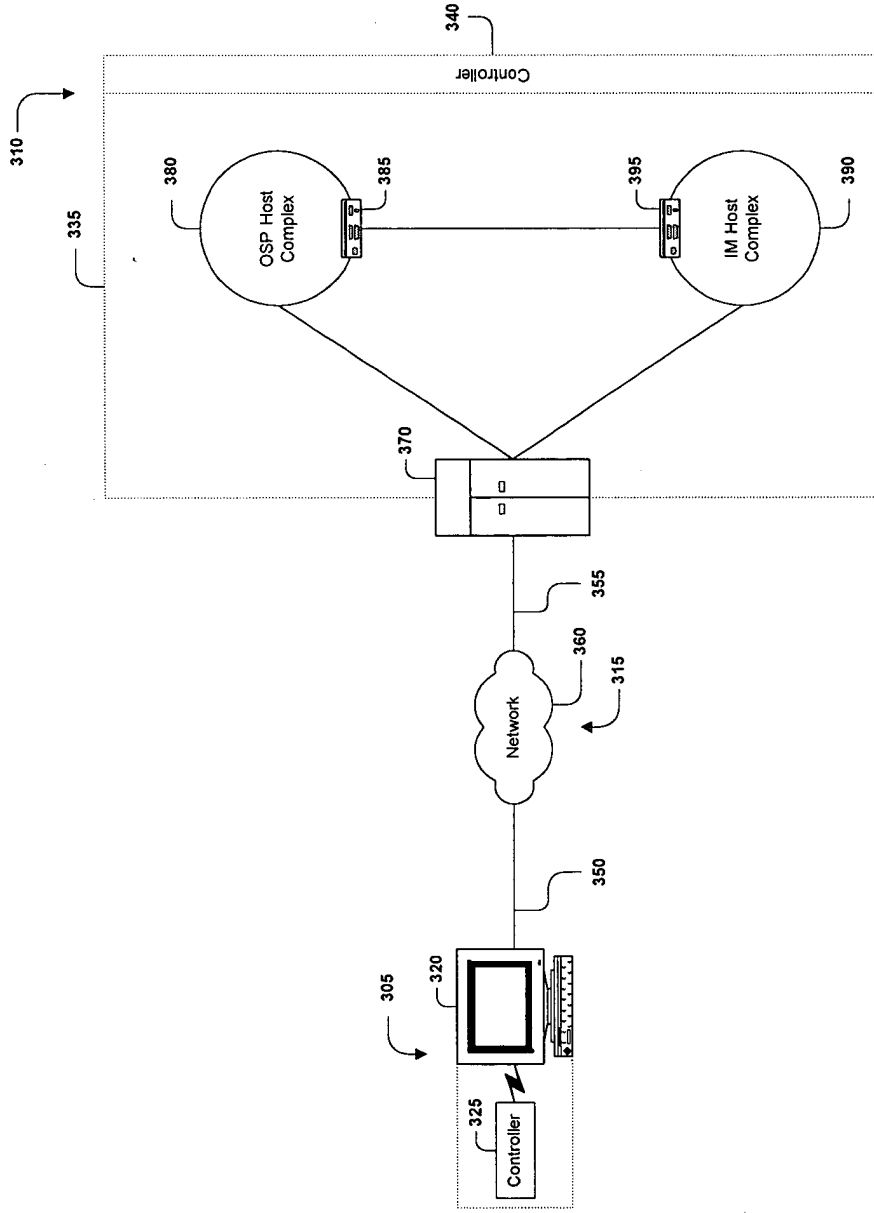


Fig. 3

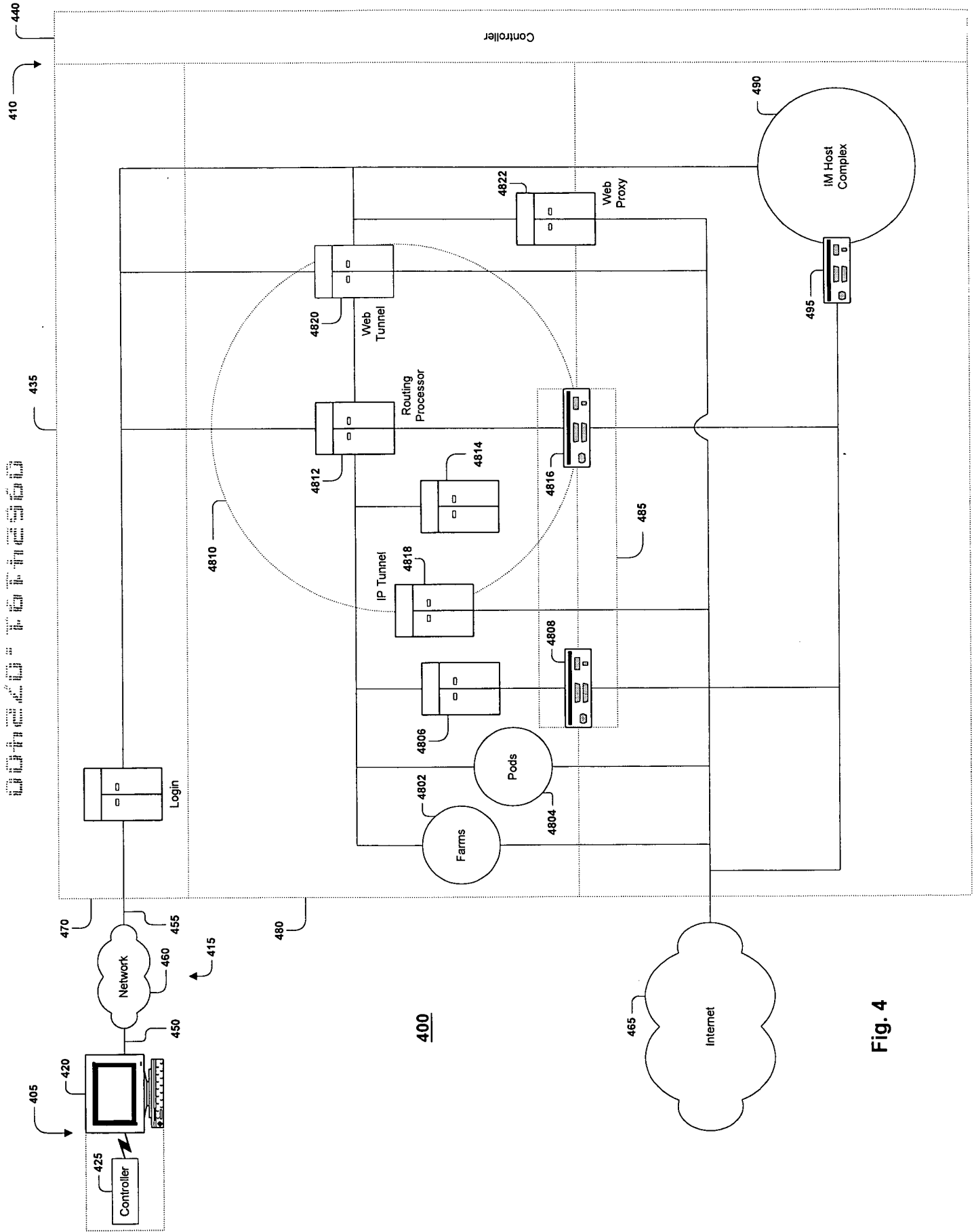


Fig. 4

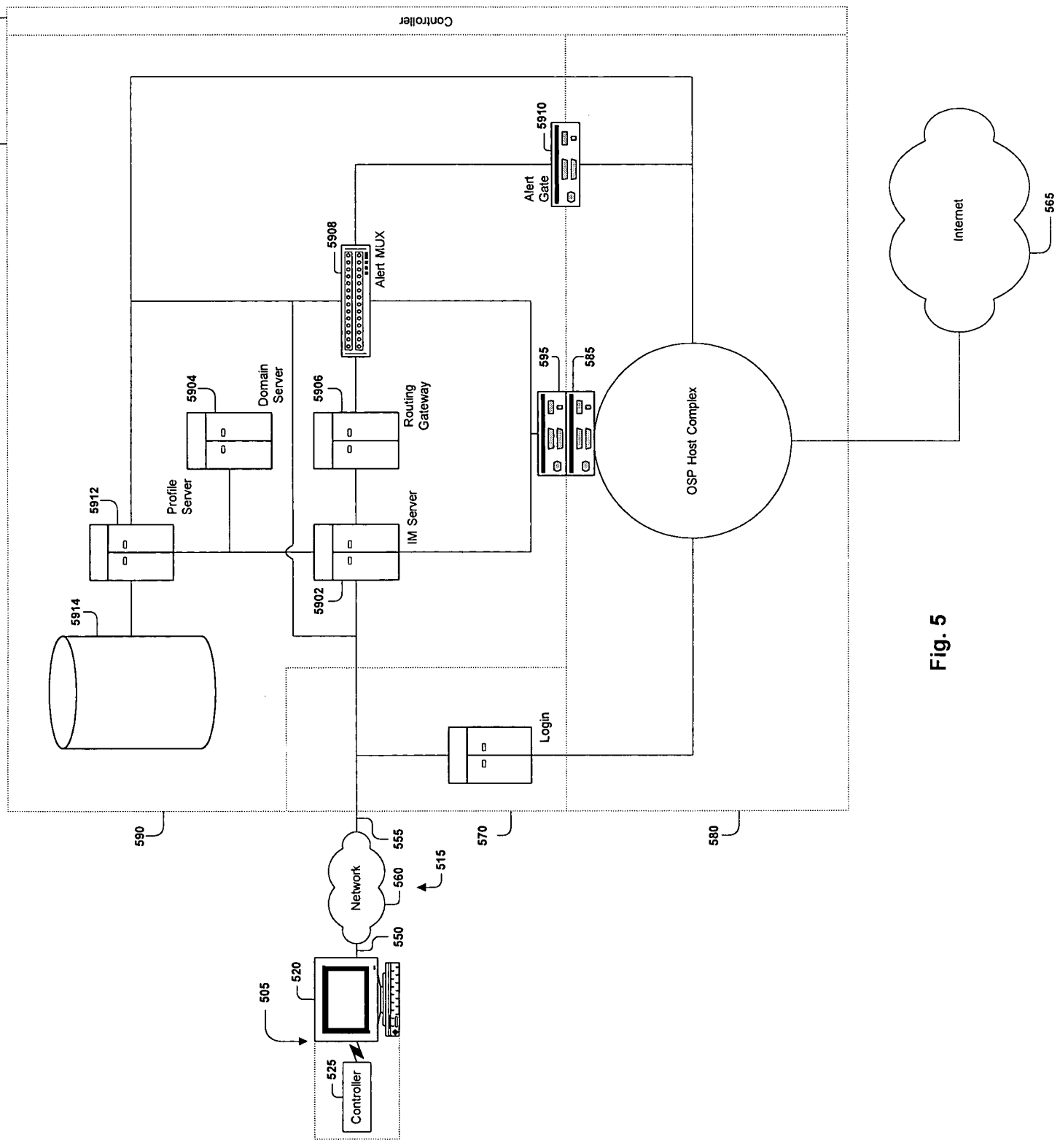


Fig. 5

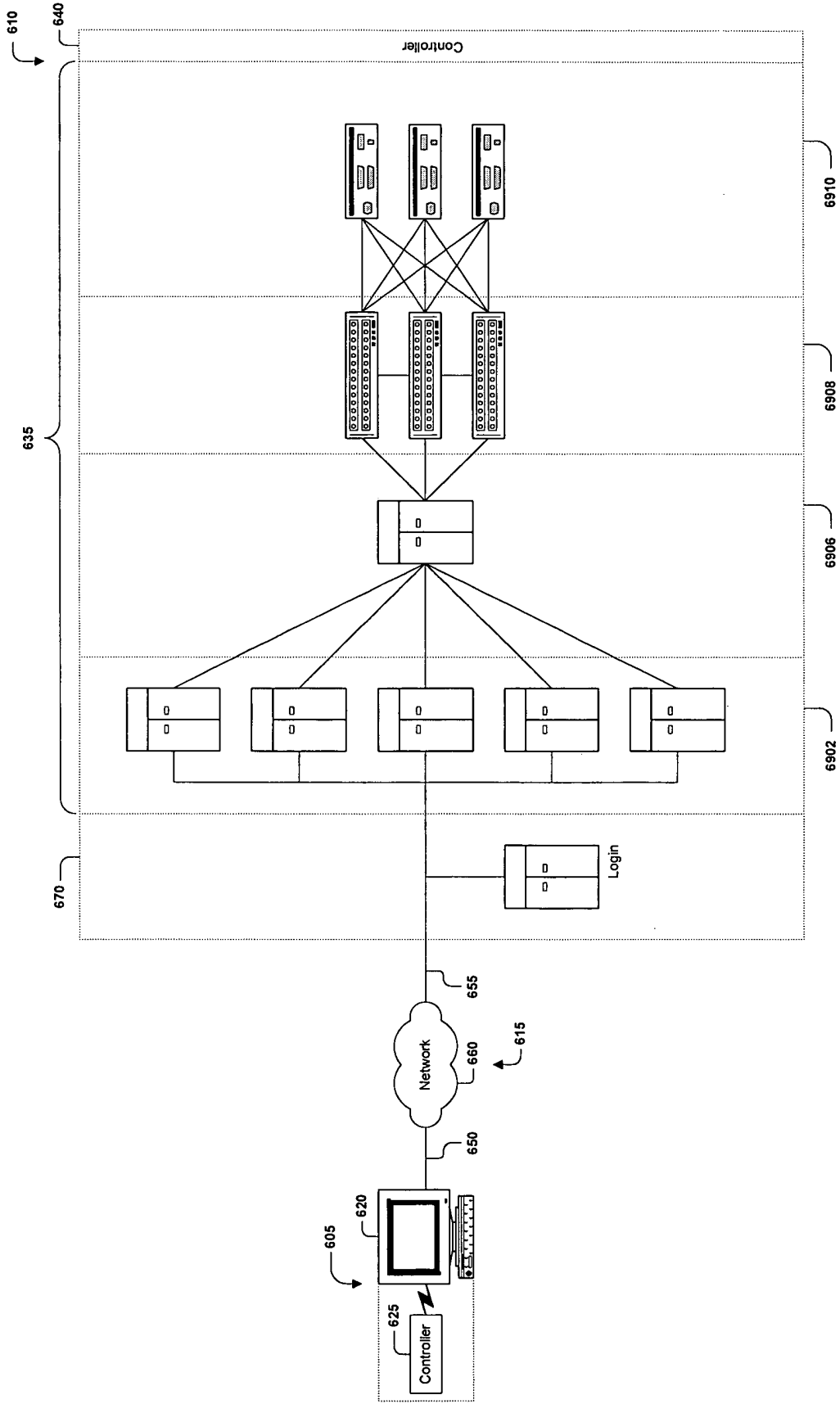


Fig. 6

700

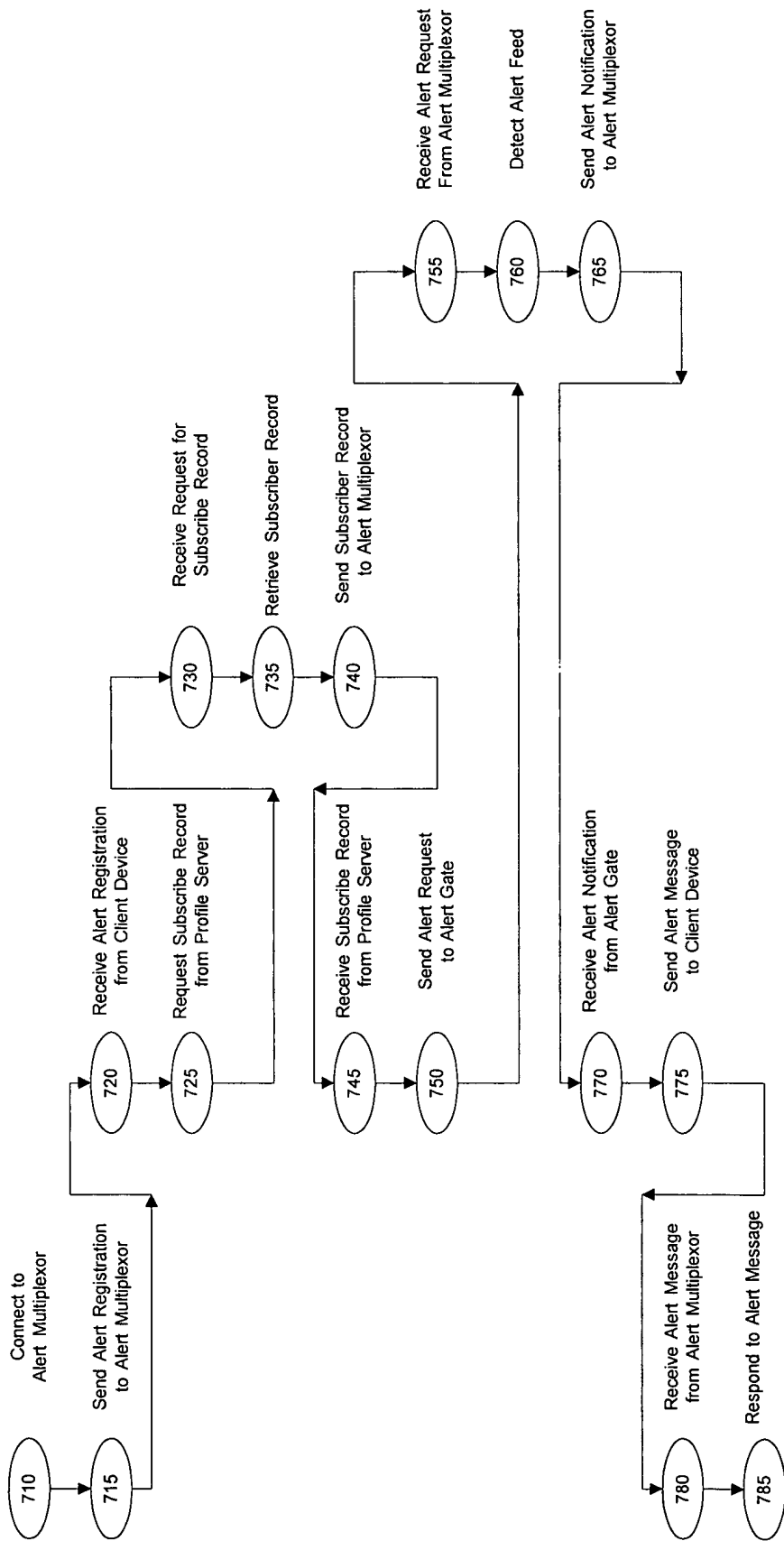
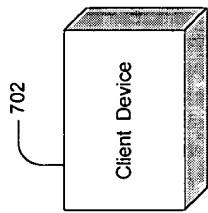
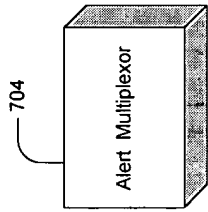
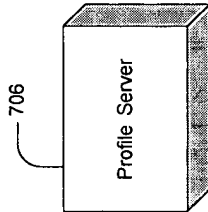
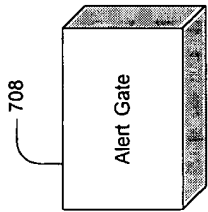


Fig. 7

800

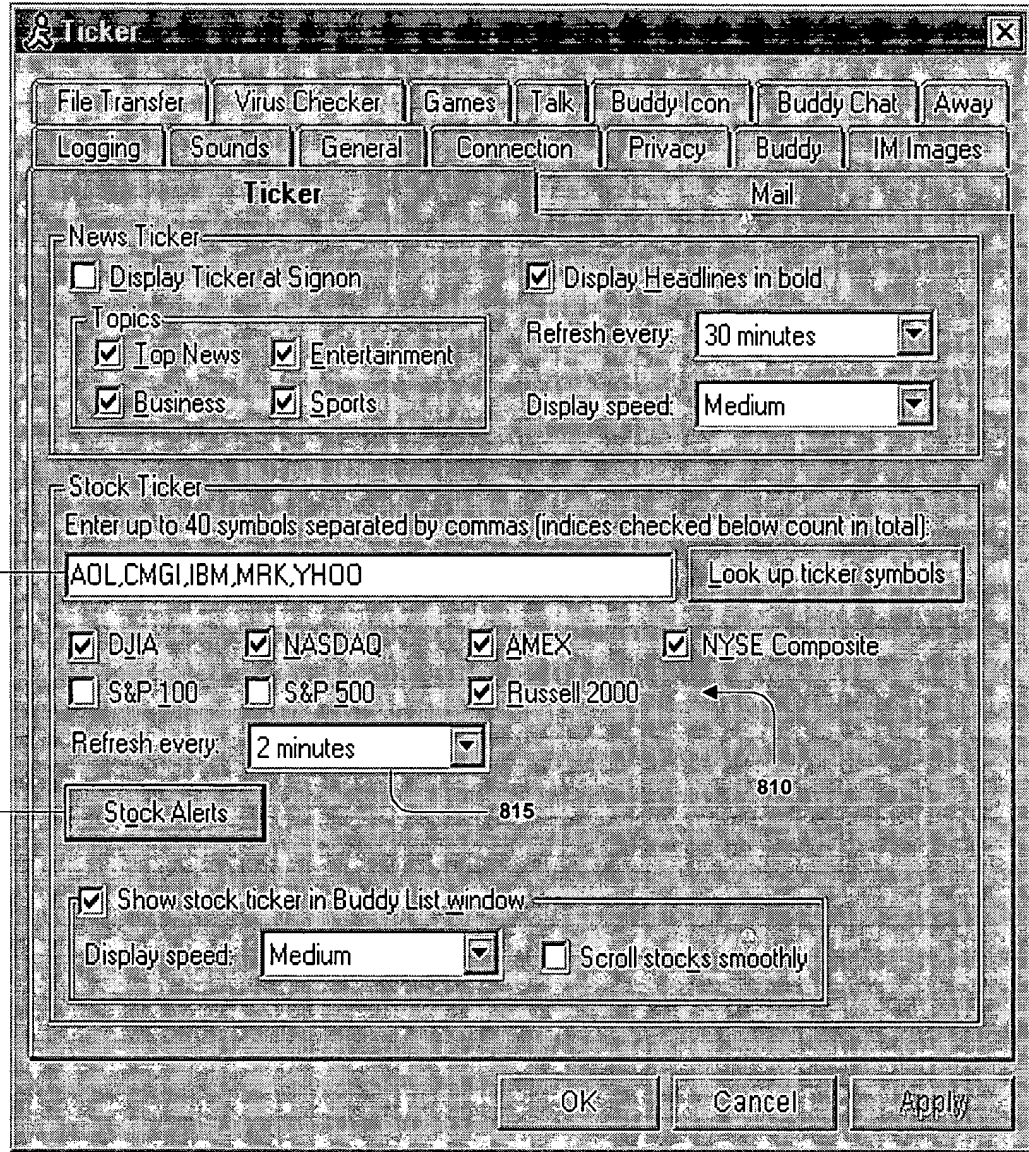


Fig. 8



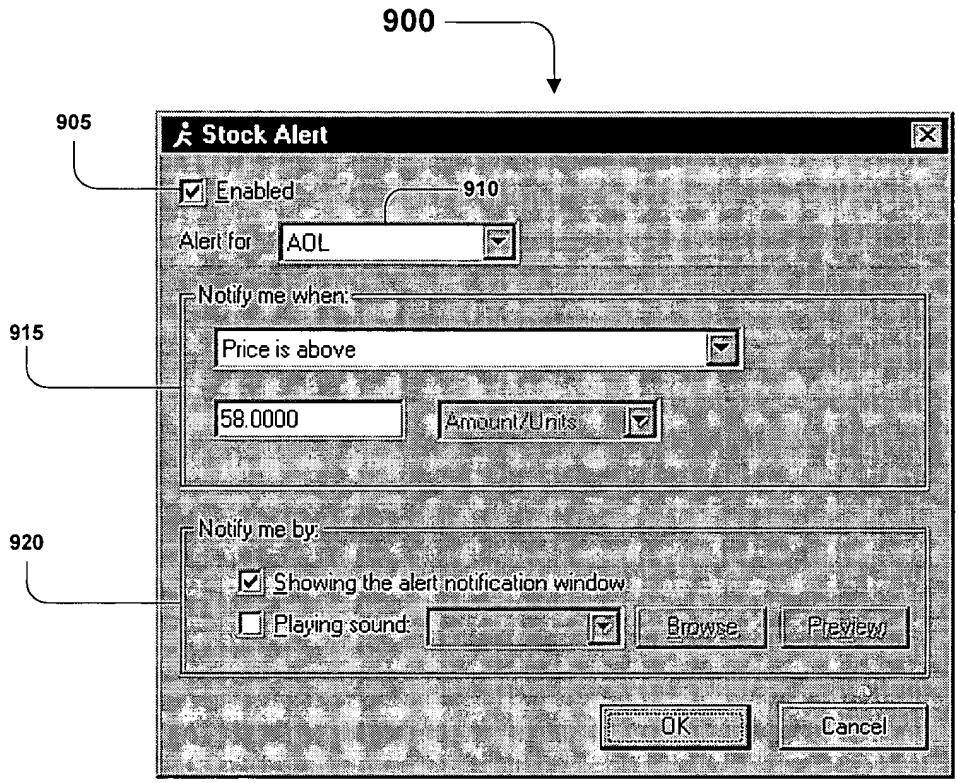


Fig. 9

1000

1010

1005

1035

1040

1015

1020

1025

1030

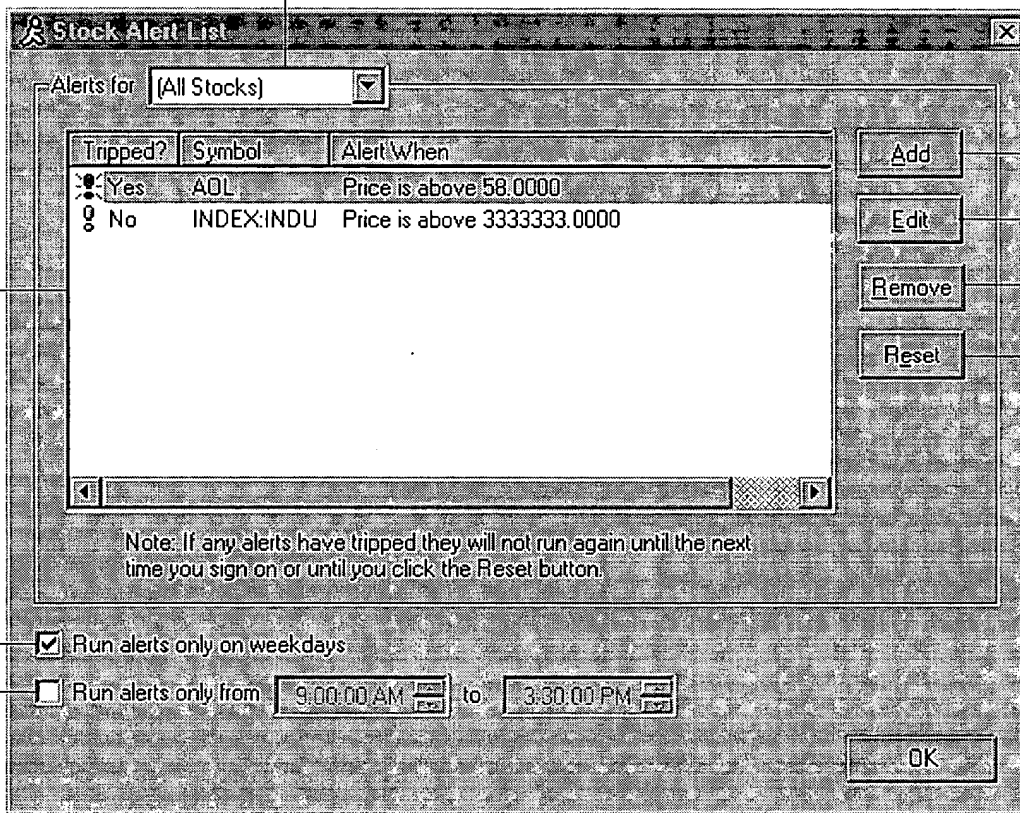


Fig. 10

Downloaded from www.industrydocuments.ucsf.edu

004220 76716560

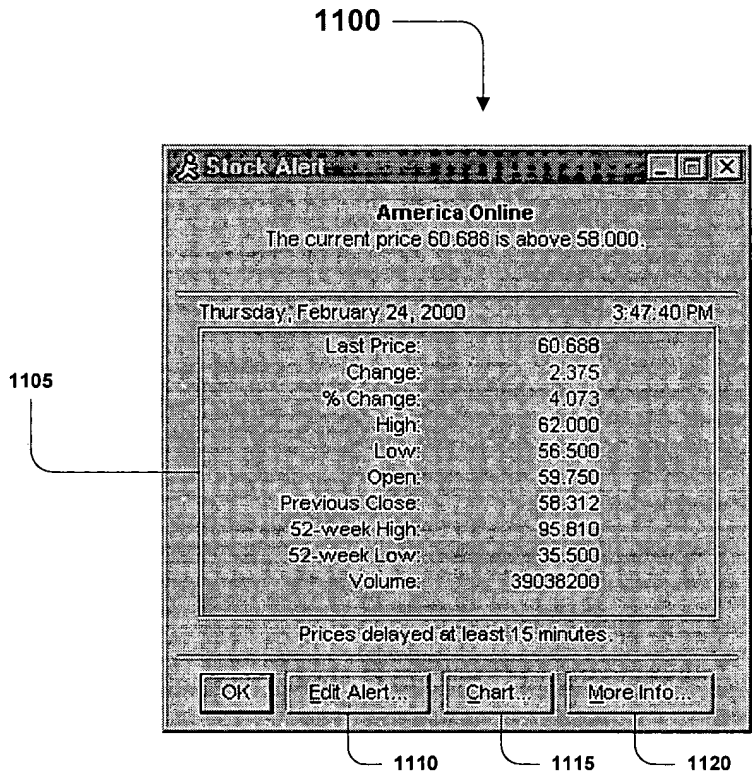


Fig. 11

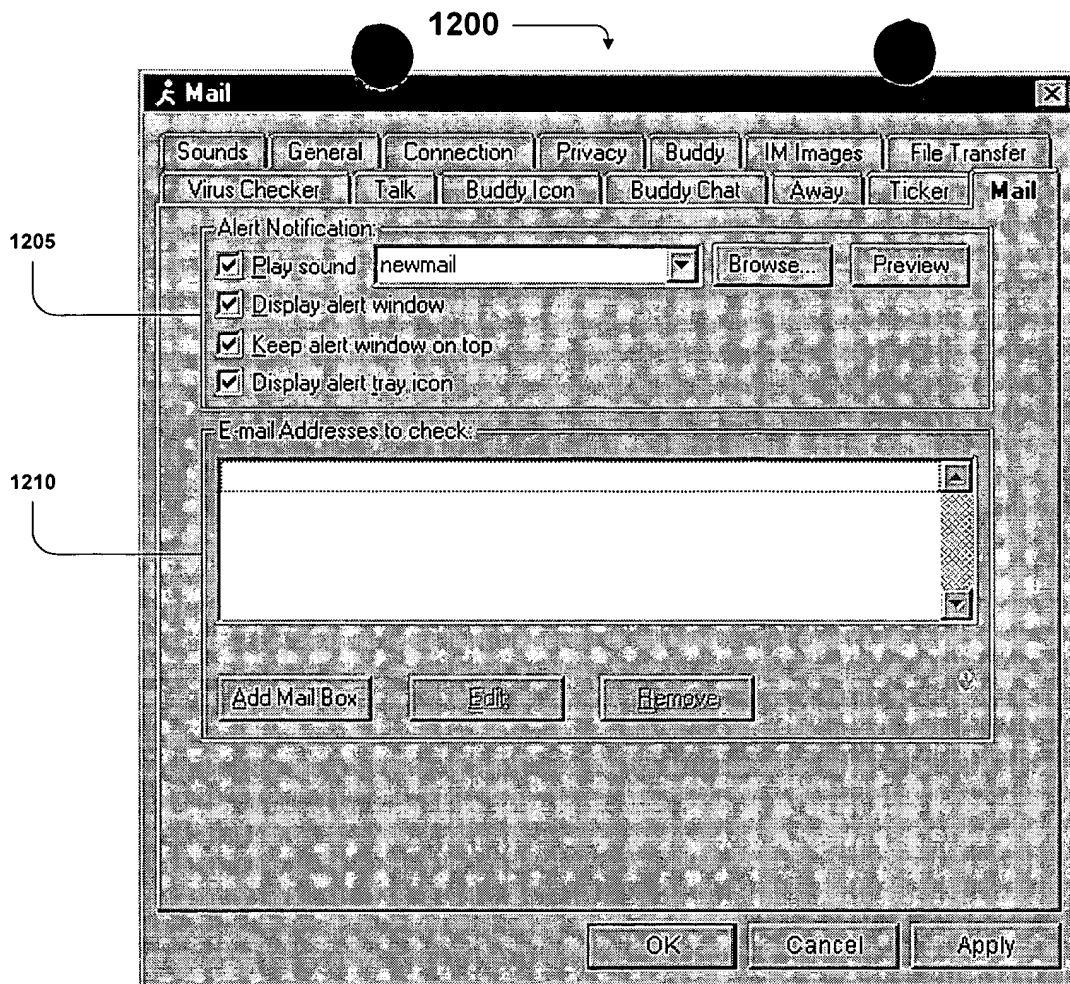


Fig. 12

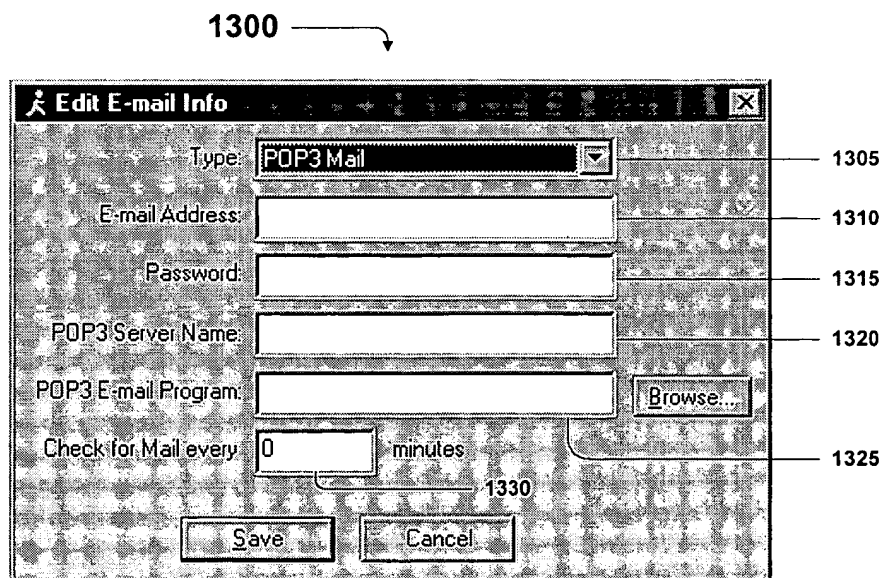
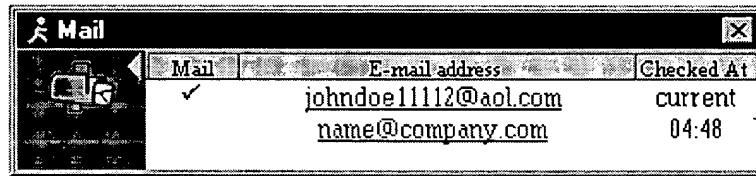


Fig. 13

1400



The screenshot shows a window titled "Mail" with a close button in the top right corner. The window contains a table with three columns: "Mail", "E-mail address", and "Checked At". The "Mail" column has a checkmark in the first row. The "E-mail address" column contains two email addresses: "johndoe11112@aol.com" and "name@company.com". The "Checked At" column contains the text "current" and "04:48".

Mail	E-mail address	Checked At
✓	<u>johndoe11112@aol.com</u>	current
	<u>name@company.com</u>	04:48

1405

Fig. 14